

HOSPITAL  
FURNITURE  
www.promixcogroup.com



**PROMIXCO**  
Caring for a healthy life







PROMIXCO continues to demonstrate that the high quality Medical Furniture can be manufactured in Bangladesh and marketed at competitive prices. We are supplying Medical Furniture at lower prices to hospitals and diagnostic centers, enabling them to offer their range of services at reasonable cost to their patients.

PROMIXCO started the journey 23 years ago. We have expanded our range of activities in the medical sector over the years, the manufacture of Medical Furniture being the latest. This unique initiative made us the pioneer and prime mover in this virgin field. Import substitute products from PROMIXCO are contributing to our national savings. At the same time we are catering to the requirements of the domestic market. We have also started exporting our products, thereby contributing to our national income in foreign exchange.

A handwritten signature in black ink, appearing to read 'Mousumi Islam'.

**Mousumi Islam**  
Chairperson



# OUR TEAM



**SAMANTA ISLAM**  
Managing Director



**S M SHAMIM-UZ-ZAMAN**  
Director  
Former Ambassador  
Former Military Secretary to Hon'ble President



**Ahmed Ali**  
Special Assitant to MD  
Former Consultant  
World Bank



**MOHAMMAD ABDUL HANNAN ZOARDER**  
Financial Adviser  
Former Executive Director  
BSEC & BICM



**Tipu Sultan**  
Chief Marketing Officer



**Md Didarul Islam Dipu**  
Head of Adminstration



**Khalilur Rahman Mazumdar**  
Head of Finance



**Mobile ICU**

## Eight Function Electric ICU Bed with Standard Accessories

PRO-HF2029

### TECHNICAL SPECIFICATION

- Reduce caregiver strain and workload through one-button powered width expansion and FlexAfoot™ allowing for quick configuration of the bed.
- Drive efficiency and ease of use with SlideGuard™ designed to minimise the occurrence of the patient sliding down in bed.
- Ensure safe patient care with the optional IntelliDrive™ XL Power Transport, which offers caregivers the ability to move the bed and patient with ease.
- Optimise patient care with head-of-bed alarm and optional 3-mode bed exit alarm that alerts caregivers of any safety concerns.
- The sturdy siderails, low bed position combined with seat deflate and ergonomic controls, provide patients the confidence to safely enter and exit the bed with greater independence and dignity.
- The in-bed scale means caregivers can monitor patient weight from the comfort of the bed.



## Eight Function Electric ICU Bed with Standard Accessories

PRO-HF2028

### TECHNICAL SPECIFICATION

- Caregivers can respond more rapidly with Auto CPR, which flattens the back rest and automatically places the bed into a horizontal position, should patient complications occur.
- Optimise patient care with Head-of-Bed Angle Alarm, ensuring compliance of local protocols.
- Simple Weigh improves workflow efficiency by excluding the weight of hanging accessories and IV poles, therefore reducing the steps needed to obtain patient weight.
- Bright and easy-to-use Graphical Caregiver Interface (GCI) offers straightforward visuals of patient information, such as head-of-bed angle and other caregiver alarms.
- Optional in-bed x-ray, via a selection of Hillrom therapeutic surfaces.
- 3-mode Bed Exit Alarm, alerts caregivers of potential bed exit events



## Gyneanocological Bed with Standard Accessoriess

### PRO-HF2027

#### TECHNICAL SPECIFICATION

- Stow and Go™ no-lift patient foot section
  - Convenient, stow away foot section stores under the bed, eliminating lifting and saving you valuable space in the birthing suite. Light weight lift-off foot section.
  - Lightweight and easy to handle, the foot section stores on a built-in stand keeping the mattress of the floor.
  - EasyGlide™ calf supports Wider support with a strong release lever that can be actuated from any angle with one hand. Ergonomic blue handles with integrated IV pole cradle
  - Posture and efficiency were taken into consideration with this option to the Affinity™ Four Bed.
  - Caregiver posture is naturally directed to a comfortable position with the angled design of these handles.
  - You can also transfer 2 IV poles at once without assistance because of the IV pole cradle that is built into these handles. Integrated IV poles. Integrated IV poles offer a permanent solution for ease of transporting fluids. Line managers Optional line managers offer you the ability to maximize the organization and efficiency of your medical equipment lines.
- Battery Backup
- With battery backup, you can use all the bed's features, including changing height and position, when you're away from an outlet, reducing the time from "decision to incision" in critical situations.
- Zero transfer gap OneStep™ siderail release 227 kg (500 lb) Safe Working Load; Foot Section 181 kg (400 lb). Four dual locking casters. Automatic 15 degree pelvic tilt.



## Eight Function Electric ICU Bed with Standard Accessories

### PRO-HF2026

#### TECHNICAL SPECIFICATION

- Size: 2160mm(L) x 1050mm(W) x 420/620mm(H) (Adjustable Height)
- Essential Safety for patients and caregivers
- The stability and ergonomic design of the Centuris bed's split side rails facilitate safer bed entry and exit.
- The side rails feature a smooth and fast self-lowering mechanism with dampening system that can be set in motion with one hand for accessing patients instantly
- Easy-to-Grip Side Rails help the patients to turn, reposition themselves or egress the bed, safely and with less assistance.
- Intuitive controls require minimal in-service staff training and patient education
- Easy-to-read angle indicators help improve care protocol compliance
- Rigorous testing at each stage of the bed development to meet Promixco standards.





## Five Function Electric ICU Bed with Standard Accessories PRO-HF2025

### TECHNICAL SPECIFICATION

- Size: L-2160 x W-980 x H-420/620 mm (Adjustable Height)
- Five Function Electric ICU Bed with electrically operated back rest tilting 0-75 degree, knee rest tilting 0-35°, trendelenburg tilting 0- 20°, Reverse trendelenburg tilting 0-20°
- Four easy lifting guardrails (2 on each side), which are safe and reliable, and can be fixed upward and downward.
- Easy to operate all functions through remote control.
- Removable & interchangeable high quality beautiful ABS engineering plastic head panel and foot panel.
- Head panel and foot panel equipped with safety lock
- Epoxy coated mild steel frame work and 4 section perforated top.
- 125mm dia noiseless castors with Individual braking system.
- Back rest & Knee nee can be adjusted simultaneously with single button control.
- Provision for I.V. Rod on both sides of the bed.

### STRANDED ACCESSORIES :

- Mattress:  
4" Four parts folding foam mattress with washable rexene.  
One adjustable IV pole is provided with the bed



## Five Function Electric ICU Bed with Standard Accessories PRO-HF2024

### TECHNICAL SPECIFICATION

- Size: L-2160 x W-980 x H-420/620 mm (Adjustable Height)
- Five Function Electric ICU Bed with electrically operated back rest tilting 0-75 degree, knee rest tilting 0-35°, trendelenburg tilting 0- 20°, Reverse trendelenburg tilting 0-20°
- Four easy lifting guardrails (2 on each side), which are safe and reliable, and can be fixed upward and downward.
- Easy to operate all functions through remote control.
- Removable & interchangeable high quality beautiful ABS engineering plastic head panel and foot panel.
- Head panel and foot panel equipped with safety lock
- Epoxy coated mild steel frame work and 4 section perforated top.
- 125mm dia noiseless castors with Individual braking system.
- Back rest & Knee nee can be adjusted simultaneously with single button control.
- Provision for I.V. Rod on both sides of the bed.

### STRANDED ACCESSORIES :

- Mattress:  
4" Four parts folding foam mattress with washable rexene.  
One adjustable IV pole is provided with the bed



## Five Function Electric ICU Bed with Standard Accessories

### PRO-HF2023

#### TECHNICAL SPECIFICATION

- Size: L-2160 x W-980 x H-420/620 mm (Adjustable Height)
- Five Function Electric ICU Bed with electrically operated back rest tilting 0-75 degree, knee rest tilting 0-35°, trendelenburg tilting 0- 20°, Reverse trendelenburg tilting 0-20°
- Two easy collapsible side railings (one on each side), which are safe and reliable and can be fixed Left & Right.
- Easy to operate all functions through remote control.
- Removable & interchangeable high quality beautiful ABS engineering plastic head panel and foot panel.
- Head panel and foot panel equipped with safety lock
- Epoxy coated mild steel frame work and 4 section perforated top.
- 125mm dia noiseless castors with Individual braking system.
- Back rest & Knee rest can be adjusted simultaneously with single button control.
- Provision for I.V. Rod on both sides of the bed.

#### STRANDED ACCESSORIES :

- Mattress:  
4" Four parts folding foam mattress with washable rexene.  
One adjustable IV pole is provided with the bed



## Five Function Electric ICU Bed with Standard Accessories

### PRO-HF2022

#### TECHNICAL SPECIFICATION

- Size: L-2160 x W-980 x H-420/620 mm (Adjustable Height)
- Five Function Electric ICU Bed with electrically operated back rest tilting 0-75 degree, knee rest tilting 0-35°, trendelenburg tilting 0- 20°, Reverse trendelenburg tilting 0-20°
- Two easy collapsible side railings (one on each side), which are safe and reliable and can be fixed Left & Right.
- Easy to operate all functions through remote control.
- Removable & interchangeable high quality beautiful ABS engineering plastic head panel and foot panel.
- Head panel and foot panel equipped with safety lock
- Epoxy coated mild steel frame work and 4 section perforated top.
- 125mm dia noiseless castors with Individual braking system.
- Back rest & Knee rest can be adjusted simultaneously with single button control.
- Provision for I.V. Rod on both sides of the bed.

#### STRANDED ACCESSORIES :

- Mattress:  
4" Four parts folding foam mattress with washable rexene.  
One adjustable IV pole is provided with the bed



## Three Function Electric ICU Bed with standard accessories PRO-HF2021

### TECHNICAL SPECIFICATION

- Size: 2160mm(L) x 940mm(W) x 500/740mm(H) (Adjustable Height).
- Three Function Electric ICU Bed with electrically operated remote controlled back rest 0-75°, knee rest 0-45° and height position.
- Two easy collapsible side railings (one on each side), which are safe and reliable and can be fixed Left & Right.
- Removable & interchangeable high quality beautiful ABS engineering plastic head panel and foot panel.
- Epoxy coated mild steel frame work and 4 section perforated top.
- 125mm dia noiseless castors with single brakes.
- Provision for I.V. Rod on both sides of the bed.

### STRANDED ACCESSORIES :

- Mattress:  
4" Four parts folding foam mattress with washable rexene.  
One adjustable IV pole is provided with the bed



## Three Function Manual ICU Bed with standard accessories PRO-HF2020

### TECHNICAL SPECIFICATION

- Size: 2160mm(L) x 940mm(W) x 500/740mm(H) (Adjustable Height).
- Three Function Manual ICU Bed with Manually Operated by Crank Mechanism.
- Removable & interchangeable high quality beautiful ABS engineering plastic head panel and foot panel.
- Four easy lifting guardrails (2 on each side), which are safe and reliable and can be fixed upward and downward.
- Bed sheet top made from perforated sheet, epoxy powder coated and back oven finish.
- Bed framework made from mild steel ERW rectangular tubes.
- 100mm dia noiseless castors with Individual braking system.

### STRANDED ACCESSORIES :

- Mattress:  
4" Four parts folding foam mattress with washable rexene.  
One adjustable IV pole is provided with the bed



## Three Function Electric ICU Bed with standard accessories PRO-HF2019

### TECHNICAL SPECIFICATION

- Size: 2160mm(L) x 940mm(W) x 500/740mm(H) (Adjustable Height).
- Three Function Electric ICU Bed with electrically operated remote controlled back rest 0-75°, knee rest 0-45° and height position.
- Two easy collapsible side railings (one on each side), which are safe and reliable and can be fixed Left & Right.
- Removable & interchangeable high quality beautiful ABS engineering plastic head panel and foot panel.
- Epoxy coated mild steel frame work and 4 section perforated top.
- 125mm dia noiseless castors with single brakes.
- Provision for I.V. Rod on both sides of the bed.

### STRANDED ACCESSORIES :

- Mattress:  
4" Four parts folding foam mattress with washable rexene.
- One adjustable IV pole is provided with the bed



## Three Function Manual ICU Bed with standard accessories PRO-HF2018

### TECHNICAL SPECIFICATION

- Size: 2160mm(L) x 940mm(W) x 500/740mm(H) (Adjustable Height).
- Three Function Manual ICU Bed with Manually Operated by Crank Mechanism.
- Removable & interchangeable high quality beautiful ABS engineering plastic head panel and foot panel.
- Four easy lifting guardrails (2 on each side), which are safe and reliable and can be fixed upward and downward.
- Bed sheet top made from perforated sheet, epoxy powder coated and back oven finish.
- Bed framework made from mild steel ERW rectangular tubes.
- 100mm dia noiseless castors with Individual braking system.

### STRANDED ACCESSORIES :

- Mattress:  
4" Four parts folding foam mattress with washable rexene.
- One adjustable IV pole is provided with the bed





## Two Function Electric ICU Bed with standard accessories PRO-HF2017

### TECHNICAL SPECIFICATION

- Size: L-2080 x W-900 x H-500 mm (Adjustable Height).
- Two function electrical ICU bed with electrically operated by remote controlled.
- Removable & interchangeable high quality beautiful ABS engineering plastic head panel and foot panel.
- Two easy collapsible side railings (one on each side), which are safe and reliable and can be fixed Left & Right.
- Epoxy coated mild steel frame work and 4 section top.
- 125mm dia noiseless castors (all with individual brakes)
- Provision for I.V. Rod on both sides of the bed.
- Freight saving knock down construction

### STRANDED ACCESSORIES:

- Mattress:  
4" Four parts folding foam mattress with washable rexene.  
One adjustable IV pole is provided with the bed



## Two Function Manual Hospital Bed with standard accessories PRO-HF2016

### TECHNICAL SPECIFICATION

- Size: L-2030 x W-900 x H-500 mm
- Standard Two Function Manual ICU Bed with mechanically operated back rest by crank mechanism.
- Smart & Spaceless two crank on bed.
- Head and foot panel are made of mild steel tube.
- Epoxy coated mild steel frame work and 4 section top.
- Provision for I.V. Rod on both sides of the bed.
- Freight saving knock-down construction

### STRANDED ACCESSORIES:

- Mattress:  
4" four part folding foam mattress with washable rexene.  
One adjustable IV pole is provided with the bed



## Two Function Electric ICU Bed with standard accessories PRO-HF2015

### TECHNICAL SPECIFICATION

- Size: L-2080 x W-900 x H-500 mm (Adjustable Height).
- Two function electrical ICU bed with electrically operated by remote controlled.
- Removable & interchangeable high quality beautiful ABS engineering plastic head panel and foot panel.
- Two easy collapsible side railings (one on each side), which are safe and reliable and can be fixed Left & Right.
- Epoxy coated mild steel frame work and 4 section top.
- 125mm dia noiseless castors (all with individual brakes)
- Provision for I.V. Rod on both sides of the bed.
- Freight saving knock down construction

### STRANDED ACCESSORIES:

- Mattress:  
4" Four parts folding foam mattress with washable rexene.  
One adjustable IV pole is provided with the bed



## Two Function Manual Hospital Bed with standard accessories PRO-HF2014

### TECHNICAL SPECIFICATION

- Size: L-2030 x W-900 x H-500 mm
- Standard Two Function Manual ICU Bed with mechanically operated back rest by crank mechanism.
- Smart & Spaceless two crank on bed.
- Head and foot panel are made of mild steel tube.
- Epoxy coated mild steel frame work and 4 section top.
- Provision for I.V. Rod on both sides of the bed.
- Freight saving knock-down construction

### STRANDED ACCESSORIES:

- Mattress:  
4" four part folding foam mattress with washable rexene.  
One adjustable IV pole is provided with the bed



## One Function Hospital Bed with Standard Accessories PRO-HF2013

### TECHNICAL SPECIFICATION

- Size: L-2030 x W-900 x H-500 mm.
- Standard One Function Manual ICU Bed bed with mechanically operated back rest by crank mechanism.
- Removable & interchangeable high quality beautiful ABS engineering plastic head panel and foot panel.
- Epoxy coated mild steel frame work and 2 section top.
- 100mm noiseless castors with & without brake system.
- Mounted on protective stumps.
- Provision for I.V. Rod.
- Freight saving knock-down construction

### STRANDED ACCESSORIES:

- Mattress:  
2" Two part foam mattress with washable rexene.  
One adjustable IV pole is provided with the bed



## One Function Hospital Bed with Standard Accessories PRO-HF2012

### TECHNICAL SPECIFICATION

- Size: L-2034 x W-890 x H-915 mm.
- Standard size Hospital Bed with Mechanically operated back rest by super- smooth rank mechanism.
- Bed frame made of mild steel with 2 section top.
- Head & Leg guard adjusted are stainless steel tube frames with shiny color mirror polish.
- Also, provision of Mosquito stand.
- Steel (MS) chemically de-rusted, zinc phosphate coated Finished & shiny lacquer finished.
- Free hand bands are constructed by automatic Sheet & tube banding machine.

### STRANDED ACCESSORIES:

- Mattress:  
2" Two part foam mattress with washable rexene.  
One adjustable IV pole is provided with the bed.



## One Function Hospital Bed with Standard Accessoriess

PRO-HF2011

### TECHNICAL SPECIFICATION

- Size: L-2034 x W-900 x H-915 mm.
- Standard size Hospital Bed with mechanically operated back rest by super- smooth crank mechanism.
- Bed frame made of stainless steel with 2 section top.
- Head guard & Leg Guard are stainless steel tube frame.
- Pataton are made by stainless steel steel Sheet.
- Also, provision of saline & mosquito stand.
- All stainless steel are shiny color mirror polish Finished.
- High quality plastic inner stopper on end of tubes.
- Free hand bands are constructed by automatic Sheet & tube banding machine.

### STRANDED ACCESSORIES :

- Mattress:  
2" Two part foam mattress with washable rexene.  
One adjustable IV pole is provided with the bed.



## One Function Hospital Bed with Standard Accessoriess

PRO-HF2010

### TECHNICAL SPECIFICATION

- Size: L-2034 x W-890 x H-915 mm.
- Standard size Hospital Bed with Mechanically operated back rest by super- smooth rank mechanism.
- Bed frame made of mild steel with 2 section top.
- Head guard & Leg Guard are mild steel tube frame.
- Pataton are made by cold rolled mild steel Sheet.
- Also, provision of Mosquito stand with hooks.
- Steel (MS) chemically de-rusted, zinc phosphate coated paint Finished.
- Free hand bands are constructed by automatic Sheet & tube banding machine.

### STRANDED ACCESSORIES :

- Mattress:  
2" Two part foam mattress with washable rexene.  
One adjustable IV pole is provided with the bed.



## No Function Hospital Bed with standard accessoriess

PRO-HF2009

### TECHNICAL SPECIFICATION

- Size: L-2080 x W-915 x H-915 mm.
- Standard type No Function Bed made of steel frame with ABS plastic.
- Removable & interchangeable high quality beautiful ABS engineering plastic head panel and foot panel.
- Structure are made of MS tube & sheet with zink phosphating powder coating paint.
- Both side two nos collapsible railing (each side One pcs).
- 100mm caster wheel for moving around.
- Provision for I.V. Rod on both sides of the bed.

### STRANDED ACCESSORIES :

- Mattress:  
2" Single part foam mattress with washable rexene.  
One IV pole is provided with the bed.



## No Function Hospital Bed with standard accessoriess

PRO-HF2008

### TECHNICAL SPECIFICATION

- Size: L-2080 x W-915 x H-915 mm.
- Standard type No Function Bed made of steel frame with ABS plastic.
- Removable & interchangeable high quality beautiful ABS engineering Plastic head panel and foot panel.
- Structure are made of MS tube & sheet with zink phosphating powder coating paint.
- Provision for I.V. Rod on both sides of the bed.

### STRANDED ACCESSORIES :

- Mattress:  
2" Single part foam mattress with washable rexene.  
One adjustable IV pole is provided with the bed.  
Plastic inner stopper.





## No Function Hospital Bed with standard accessoriess PRO-HF2007

### TECHNICAL SPECIFICATION

- Size: L-2034 x W-890 x H-915 mm.
- Standard size Hospital Bed structure made of mild steel.
- Bed frame made of mild steel with single section top.
- Head guard & Leg Guard are stainless steel tube frame with mirror polish finished.
- Pataton are made by cold rolled mild steel Sheet.
- Also, provision of Mosquito stand with hooks.
- Steel (MS) chemically de-rusted, zinc phosphate coated Finished.
- Free hand bands are constructed by automatic Sheet & tube banding machine.

### STRANDED ACCESSORIES :

- Mattress:  
2" Single part foam mattress with washable rexene.  
One IV pole is provided with the bed.



## No Function Hospital Bed with standard accessoriess PRO-HF2006

### TECHNICAL SPECIFICATION

- Size: L-2034 x W-890 x H-915 mm.
- Standard size Hospital Bed structure made of mild steel.
- Bed frame made of mild steel with single section top.
- Head guard & Leg Guard are mild steel tube frame.
- Pataton are made by cold rolled mild steel Sheet.
- Also, provision of saline & Mosquito stand.
- Steel (MS) chemically de-rusted, zinc phosphate coated paint Finished.
- Free hand bands are constructed by automatic Sheet & tube banding machine.

### STRANDED ACCESSORIES :

- Mattress:  
2" Single part foam mattress with washable rexene.  
One IV pole is provided with the bed.



## Orthopedic Bed with standard accessoriess

PRO-HF2005

### TECHNICAL SPECIFICATION

- Size: L-2160 x W-915 x H-1950 mm.
- Standard type Three Function Bed made of steel frame with ABS plastic.
- Removable & interchangeable high quality beautiful ABS engineering plastic head panel and foot panel.
- Structure are made of mild steel & sheet with zink phosphating powder coating paint.
- Leg & hand hanging or keeping stand are stainless steel frame with clamp on upper part.
- Both side two nos collapsible railing (each side One pcs).
- 4" wheel for moving around.
- Provision for I.V. Rod on both sides of the bed.

### STRANDED ACCESSORIES :

- Mattress:  
2" Single part foam mattress with washable rexene.  
One IV pole is provided with the bed.



## Orthopedic Bed with standard accessoriess

PRO-HF2004

### TECHNICAL SPECIFICATION

- Size: L-2160 x W-915 x H-1950 mm.
- Standard type Two Function Bed made of steel frame.
- Head panel and foot panel are stainless steel tube with shiny color polish finish.
- Structure are made of mild steel & sheet with zink phosphating powder coating paint.
- Leg & hand hanging or keeping stand are stainless steel frame with clamp on upper part..
- Four Nos plastic inner stopper on end of steel tube.
- Provision for I.V. Rod on both sides of the bed.

### STRANDED ACCESSORIES :

- Mattress:  
2" Single part foam mattress with washable rexene.  
One IV pole is provided with the bed.



## Traction Bed

PRO-HF2003

### TECHNICAL SPECIFICATION

- Size: L-1450-1650 x W-620 x H-450 mm.
- Standard size two section traction bed structure are made of mild steel tube & foam cushioning.
- Traction travel: 145-190mm, Traction: Neck / 200N; Waist: / 800N
- C1: Suitable for slim people use, C2: Suitable for partial fat crowd
- C3: Self-adhesive thicker traction belt, suitable for partial fat crowd. This belt is more easy to wear.
- Traction time: every 15-30 minutes. Daily no more than 2 times, according to the condition of 10-15 days for a course of treatment. This product uses the rack and pinion structure, the use of human muscle elasticity generated by the force, to achieve the role of traction therapy to facilitate patients in the family, office, and other occasions, self-traction therapy, the working principle for the effective reduction of spinal joints Of the pressure, so that the full compression part of the amendment is conducive to the protrusion of the return.



## Physiotherapy Bed

PRO-HF2002

### TECHNICAL SPECIFICATION

- Size: L-1950 x W-620 x H-750 mm.
- Standard size Examination Table made by mild steel (MS) Box tube.
- Main frame are made of mild steel tube & upper 2" water proof rexene covered foam mattress with mouth keeping hole.
- Lower part one shelf made of mild steel sheet.
- All Steel (MS) are chemically de-rusted, zinc phosphate coated back oven powder paint finished.
- Leg should be high quality Inner plastic Stopper.
- Free hand bands are constructed by automatic banding machine.
- With 2" Foam Mattress with water proof raxine.





## Baby Bed With Standard Accessoriess

PRO-HF2001

### TECHNICAL SPECIFICATION

- Size: L-850 x W-450 x H-850 mm
- Standard size Baby bed made by non-magnetic stainless steel tube & sheet with shiny color polish finished.
- Head side of bed top are manually adjustable (Up & Down) with four side protective railings.
- 2" Caster wheel on lower part for moving around.
- Also, one tray for keeping cloth after used.
- Free hand bands are constructed by automatic tube banding machine.

### STRANDED ACCESSORIES :

- Mattress:  
1" Single part foam mattress with washable rexene.  
One IV pole is provided with the bed.



## Baby Bed With Standard Accessoriess

PRO-HF2000

### TECHNICAL SPECIFICATION

- Size: L-850 x W-450 x H-850 mm
- Standard size Baby bed made by non-magnetic stainless steel tube & sheet with shiny color polish finished.
- Bed Structure made of stainless steel tube & sheet.
- Head side of bed top are manually adjustable (Up & Down) with four side protective railings.
- Two H-type mosquito stand on leg & head side.
- 2" Caster wheel on lower part for moving around.
- Also, one tray for keeping cloth after used.
- Free hand bands are constructed by automatic tube banding machine.

### STRANDED ACCESSORIES :

- Mattress:  
1" Single part foam mattress with washable rexene.  
One IV pole is provided with the bed.



## Baby Bed With Standard Accessoriess

PRO-HF1999

### TECHNICAL SPECIFICATION

- Size: L-870 x W-530 x H-920 mm.
- Height adjustable 920-1070mm.
- Moulded Plastic Crib (without joints) with clear
- Visibility for observer.
- Smooth Rotatng Castors will provide silent transportaton.
- Brakes on opposite castors.
- With 120 Trendelenburg (TR) & Reverse Trendelenburg (RTR) positon



## Baby Bed With Standard Accessoriess

PRO-HF1998

### TECHNICAL SPECIFICATION

- Size: L-870 x W-530 x H-920 mm.
- Height adjustable 920-1070mm.
- Moulded Plastic Crib (without joints) with clear
- Visibility for observer.
- Smooth Rotatng Castors will provide silent transportaton.
- Brakes on opposite castors.
- With 120 Trendelenburg (TR) & Reverse Trendelenburg (RTR) positon



## Gyneacological Bed

PRO-HF1997

### TECHNICAL SPECIFICATION

- Size: L-1850 x W-610 x H-650 to 900 (Height Adjustment)
- Gynaecological bowl capacity: 468\*338\*125mm
- Table's length in chair position: 52.4" (1310 mm)
- Back rest inclination angle: 70° (gas spring)
- Trendelenburg position: 20° (Ratchet system)
- Reverse Trendelenburg position: 10° (Ratchet system)
- Armrest swing out: 90°; Permissible load: 160kgs
- The hydraulic obstetric table is equipped with a auxiliary table for gynecological examinations and treatments
- The leg segment (auxiliary table) can be easily detached
- Height adjustment of the table realized due to hydraulic pump regulated by foot pedal
- Back segment inclination angle regulated by gas spring
- Trendelenburg and Reverse-Trendelenburg positions are realized by ratchet system
- The chassis is constructed of steel with ABS cover
- With 3 wheels to move the table and it is easy to use the hammer to lock the wheels anchored to the floor



## Gyneacological Bed

PRO-HF1996

### TECHNICAL SPECIFICATION

- Size: L-1850 x W-670 x H-945 mm.
- Standard Size Gynecological Bed with Top and leg section adjustment on manual ratchet is constructed by high quality cold rolled mild steel sheet and mild steel plate.
- Bed frame Round MS Round & square tube with MIG welded.
- Three section bed top cushioned covered by water proof leather, leg-rest (Lithotomy arrangement) and stainless steel bowl stand with bowl.
- Mounted on four swivel castors the top frame is detachable to be used as stretcher.
- Steel (MS) chemically de-rusted, zinc phosphate coated & Polishing.
- Free hand bands are constructed by automatic Sheet tube banding machine.

### STRANDED ACCESSORIES :

- One steel Bowl
- Two Nos knee rest clamp.



## Patient Examination Bed

PRO-HF1995

### TECHNICAL SPECIFICATION

- Size: L-1860 x W-610 x H-740 mm.
- Standard size Patient Examination bed Main frame are made of mild steel & manually operated Hhad side folding by mild steel slotted angle mechanism.
- Bed frame (1.2XØ32) MM Round MS Tube & others tube are 1.2XØ19 & 1.0XØ12.7 mm and slotted channel, clamp is 3.0 mm Mild Steel plate with MIG welded.
- All mild steel is zinc phosphate coated and electro static epoxy powder oven backed paint finished that confirms anti rust, shiny color and longevity.
- Leg should be high quality Inner Plastic Stopper.
- Free hand bands are constructed by automatic tube banding machine.
- Two-part mattress is Rexene covered cushioned bed on the top.



## Patient Examination Bed

PRO-HF1994

### TECHNICAL SPECIFICATION

- Size: L-1950 x W-620 x H-750 mm.
- Standard size Examination Table Made by Mild Steel (MS) Box tube with foam cushioning.
- Main frame are made of mild steel & manually operated Hhad side folding by mild steel slotted angle mechanism.
- Two part high quality water proof rexene covered 50mm foam cushioning on top.
- Leg should be high quality Inner plastic Stopper.
- All Steel (MS) chemically de-rusted, zinc phosphate coated paint finished.
- Free hand bands are constructed by automatic banding machine.



## Optima Auto Air Mattress

PRO-HF1993

### TECHNICAL SPECIFICATION

- Mattress Dimension 78.7 x 35.4 x 8 in 2000 x 900 x 200 mm
- Mattress Weight 28.6 lb 13 kg
- Maximum Patient Weight 550 lb 250 kg

### OVERVIEW

- Proprietary automatic pump optimizes mattress pressure settings to patients' weight distribution for fast pressure relief.
- Cell encapsulated in cell (cell-in-cell) in the sacrum area improves structural support for comfy sitting and in-bed movements.
- Built-in battery (optional) ensures non-stop alternating pressure relief up to 6 hours for securing transportation or power failures.
- Visual interface with LCD simplifies controls, indicators, settings, and power functionalities for all levels of caregivers to use.
- A noise-sensitive pump ensures stressed patients and caregivers recover and work in a comfortable and safe environment.



## Pro-care Bariatric Mattress

PRO-HF1992

### TECHNICAL SPECIFICATION

- Mattress Dimension 78.7 x 42 x 10 in 2000 x 1070 x 254 mm
- Mattress Weight 29 lb 13 kg
- Maximum Patient Weight 992 lb 450 kg

### OVERVIEW

- Suitable for patients at high to very high risk of pressure injuries.
- Total dynamic in Cell-on-Cell air cells for enhanced comfort and stable support.
- Alternating Low Pressure mode for an even higher comfort level to patients.
- Deliberately crafted dual compressors system silently and continuously care for patients.





## Visitor Folding bed

PRO-HF1991

### TECHNICAL SPECIFICATION

- Extra folding bed
- Mattress support in white Komadur
- 4 wheels (Ø 80 mm) with brakes
- Articulated foam mattress HR 35 Kg, 10 cm
- M1 fire-resistant cover
- Aluminium structure
- Base's structure in oxyde steel
- Mattress support in white synthesis materials which simplify the cleaning

=> Maximum allowable weight: 200 Kg

=> Warranty 2 years parts and labor



## Visitor Folding bed

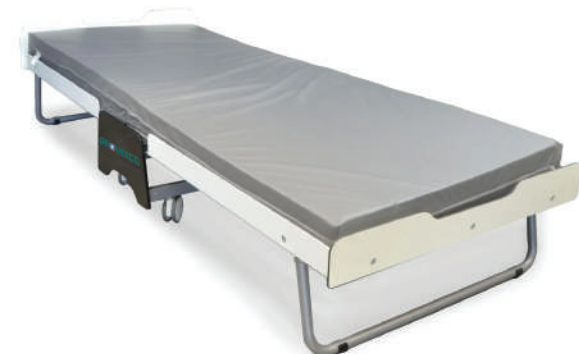
PRO-HF1990

### TECHNICAL SPECIFICATION

- Extra folding bed
- Mattress support in white Komadur
- 4 wheels (Ø 80 mm) with brakes
- Articulated foam mattress HR 35 Kg, 10 cm
- M1 fire-resistant cover
- Aluminium structure
- Base's structure in oxyde steel
- Mattress support in white synthesis materials which simplify the cleaning

=> Maximum allowable weight: 200 Kg

=> Warranty 2 years parts and labor



## Patient Hi-Low Trolley

PRO-HF2033

### TECHNICAL SPECIFICATION

- Size: L-1900 x W-610 x H-710-850 mm (Height Adjustment).
- Standard sized patient trolley main structure are stainless steel tube & sheet.
- Top frame & railing are made by SS round tube & bottom 20 (swg) sheet.
- Mechanical height adjustment crank mechanism facility with Mechanically operated back rest by super- smooth mechanism.
- Suitable for both ambulance and hospital floor use.
- Mounted on 4" four swivel castors wheel for moving around.
- All Stainless Steel are Shiny color Mirror Polish Finished.
- Free hand bands are constructed by automatic Sheet & tube banding machine.



## Patient Hi-Low Trolley

PRO-HF2034

### TECHNICAL SPECIFICATION

- Size: L-1900x W-610 x H-710-850 mm (Height Adjustment).
- Mechanical height adjustment facility.
- Suitable for both ambulance and hospital floor use.
- Detachable top to be used as stretcher.
- Vinyl leather covered cushioned bed on top complete with wheels (two wheels with brakes).
- All mild steel components pretreated, zinc phosphate coated electro-static
- Epoxy powder coated oven backed paint finished that confirms anti rust, shiny color and longevity.
- Easy and damage free transportation



## Patient Trolley

PRO-HF2035

### TECHNICAL SPECIFICATION

- Size: L-1950 x W-635 x H-850 mm.
- Stainless steel 32x1.2 mm & others are 25x1.2 mm & 19x1.0 mm Stainless steel tubular frame-work.
- Mounted on four swivel castors on leg & top frame (20 SWG SS sheet) is detachable to be used as stretcher.
- Upper part we can use as a stretcher.
- Also, one saline stand on it.
- All stainless-steel material are shiny color polish finished.
- Free hand bands are constructed by automatic tube banding machine.



## Patient Trolley

PRO-HF2036

### TECHNICAL SPECIFICATION

- Size: L-1900 x W-610 x H-850 mm.
- Mild steel 25.4 dia x 1.2 thickness & others are 19 dia x 1.2 mm tubular frame-work.
- Mounted on four swivel castors the top frame is detachable to be used as stretcher.
- All mild steel is zinc phosphate coated and electro static epoxy powder oven backed paint finished that confirms anti rust, shiny color and longevity.
- Rexine covered cushioned bed on the top.
- Free hand bands are constructed by automatic tube banding machine.





## Aluminum wheelchair with drum brake

PRO-HF2037

### TECHNICAL SPECIFICATION

- Powder coating aluminum frame
- Flip-up full armrest
- Comfortable, rotatable and detachable footrests
- Aluminum handle rim.
- Plastic black footplate
- Plastic front fork
- Aluminium brake and hand brake
- PU arm pads for extra comfort
- Standard with nylon upholstery
- 24" real spoke wheels with PU tires, drum brake, Quick-Release
- 7X2" front casters with PU tires



## Wheel Chair

PRO-HF2038

### TECHNICAL SPECIFICATION

- Seat Width (Upholstery): 18"
- Seat depth (Upholstery): 18"
- Seat Height from floor: 20"
- Overall Length ( without Rigging): 43"
- Overall height: 35"
- Fronts Casters: 8" x 2"
- Rear Wheels: 26.5" x 1.5"
- Caster Wheel's material made by sock absorbing



## Medicine Trolley

PRO-HF2039

### TECHNICAL SPECIFICATION

- Size: L-660 x W-420 x 870 mm.
- Standard sized instrument trolley made of 25mm dia Tubular frame mounted on four castor wheels for moving around.
- Three non-magnetic stainless steel (20 SWG) shelves complete with three side protective railings and one side lockable railing for prevent to dropout anything.
- Shiny and mirror polish finished.
- 3" Caster wheel for moving around.
- All stainless steel are shiny color mirror polish finished.



## Medicine Trolley

PRO-HF2040

### TECHNICAL SPECIFICATION

- Size: 660mm(L)x420mm(W)x870mm(H).
- Standard sized instrument trolley made by 25mm dia Tubular frame mounted on four castor wheels for move around.
- Two non-magnetic stainless steel (20 SWG) shelves complete with protective railings on three sides and one side lockable railing for prevent to dropout anything.
- Two drawer on upder top shelf.
- 3" Caster wheel for moving around.
- All Stainless steel are Shiny and mirror polish finished.



## Medicine Trolley ABS

PRO-HF2041

### TECHNICAL SPECIFICATION

- Aluminium alloy column with ABS engineering plastic construction
- Base with dia-125mm castors , two of which with brakes
- Five drawers ( 2 small , 2 middle & 1 large) small and middle drawers inner with medicine divider can be organized easily and freely



## Bedside Cabinet with Overbed Table

PRO-HF2042

### TECHNICAL SPECIFICATION

- Technical specifications
- External dimensions - 51 x 48.5 cm  
Dimensions top plate - 38 x 41 cm
- Height (incl. gallery hanger) - 93 cm  
Height of top plate - 89 cm
- Dimensions bed table top - 60 x 35 cm
- Bed table height - 73 –110 cm
- Load capacity of bed table top - 5 kg  
Rolls - 7.5cm



## Bed Side Locker PRO-HF2043

### TECHNICAL SPECIFICATION

- Size: L-465 x W-552 x H-870 mm .
- Made of mild steel (22 SWG) frame work having one drawer and cabinet with door.
- Malamine board top with Stainless steel railing on three sides to prevent to dropout anything and complete with wheels for moveing around.
- All inside and outside d-rusted zinc phosphate coated electro-static epoxy powder oven baked paint finish that confirms anti rust, shiny color and longevity.
- Easy and damage free transportation.



## Bed Side Locker PRO-HF2044

### TECHNICAL SPECIFICATION

- Size: L-450 x W-415 x H-725 mm
- ABS plastic engineering material with one food board, two drawers one small door (inner one shelf board)
- Two hanger on two side of cabinet.



## Hydraulic overbed Table

PRO-HF2045

### TECHNICAL SPECIFICATION

- Size: L-900 x W-450 x H-710-960 mm (Height Adjustable).
- Mild steel frame with ABS plastic material top that ensures longibilities & durabilities.
- Mild steel base with 2" swivel castors.
- The height can be super smooth by hydraulic adjusted 750 to 960mm.
- All MS are epoxy coated back oven powder paint finished.
- Top ABS engineering plastic.



## Overbed Table

PRO-HF2046

### TECHNICAL SPECIFICATION

- Size: L-850 x W-450 x H-780-950 mm (Height Adjustable).
- Mild steel frame with melamine board top with wooden bit.
- Mild steel base with 2" caster wheel.
- The height can be super smooth manually adjusted 780 to 950 mm.
- All MS are epoxy coated back oven powder paint finished.



## Bed Side Screen

PRO-HF2047

### TECHNICAL SPECIFICATION

- Size: L-1700 x W-480 x H-1800 mm.
- Standard size folding three part bed side screen is used for partition/panel.
- All frame are mild steel Tube with MIG welded.
- Free hand bands are constructed by automatic tube banding machine.
- With washable cloth curtains.
- Also, existing castor wheel for easy to move at any place.
- Steel (MS) chemically de-rusted, zinc phosphate coated Finished.



## Bed Side Screen

PRO-HF2048

### TECHNICAL SPECIFICATION

- Size: L-2270 x W-480x H-1800 mm.
- Standard size folding type Bed side screen is used for partition/panel.
- All frame are mild steel Tube with MIG welded.
- Free hand bands are constructed by automatic tube banding machine.
- With washable cloth curtains.
- Also, existing castor wheel for easy to move at any place.
- Steel (MS) chemically de-rusted, zinc phosphate coated Finished.



## Single Bowl Stand

PRO-HF2049

### TECHNICAL SPECIFICATION

- Size: L-425 x W-425 x H-740 mm
- Standard sized single Bowl Stand made of non-magnetic stainless steel tubular frame maintained on four Castrol for move around and one detachable SS Bowls for wash the equipment's
- Products are manufactured by a complete line of States of art automatic Tube bending machine.
- All stainless steel are shiny color mirror polish finished.



## Double Bowl Stand

PRO-HF2050

### TECHNICAL SPECIFICATION

- Size: L-715 x W-346 x H-740 mm.
- Standard sized double Bowl Stand is made of non-magnetic stainless steel tubular frame maintained on four Castrol for move around and two detachable SS Bowls for wash the equipment's.
- 2" Caster wheel for moving around.
- Products are manufactured by a complete line of States of art automatic Tube bending machine.
- All stainless steel are shiny color mirror polish finished.



## Saline Stand

PRO-HF2051

### TECHNICAL SPECIFICATION

- Standard size Saline Stand Structure Made by Ø25mm and sliding tube Ø12.7mm Mild steel tube.
- High quality mild steel base with five swivel castors for moving around.
- Upper part are manual adjustment by using knob.
- Four MS hooks for knitting saline.
- All MS are chemically de-rusted, epoxy coated zink phosphating powder coated paint.



## Saline Stand

PRO-HF2052

### TECHNICAL SPECIFICATION

- Standard size Saline Stand Structure Made by Ø25mm and sliding tube Ø12.7mm Stainless steel tube.
- High quality stainless steel base with five swivel castors for moving around.
- Upper part are manual adjustment by using knob.
- Four SS hooks for knitting saline.
- All SS are shiny color mirror polish finished.





## Attendend Chair

PRO-HF2053

### TECHNICAL SPECIFICATION

- Size: L-1800 x W-610 x H-450 mm.
- Standard size attendend chair made of steel structure with Mig welded Zinc Phosphate Coated oven back Powder paint finished.
- Mild Steel which will ensure durable anti peel off with caster wheel for moving around.
- 50 mm thick foam cushioning covered with best quality foreign rexine on ply wood for seat & back which increase strength.
- Folding system attendend chair also used by relaxe chair.
- PVC stopper, Rust free best quality Screw.



## Waiting Chair

PRO-HF2054

### TECHNICAL SPECIFICATION

- Standard sized high quality waiting chair are made of mild steel sheet & tubes.
- Unique design with perforated sheet seat & back thats ensure light weight & comfortable.
- Fully knock down system.
- Products are manufactured by a complete line of States of art automatic sheet bending machine.



## Treat-waiting Chair (Stainless Steel)

PRO-HF2055

### TECHNICAL SPECIFICATION

- Standard sized high quality waiting chair are made of mild steel sheet & tubes.
- Unique design with perforated sheet seat & back thats ensure light weight & comfortable.
- Fully knock down system.
- Seat & back are mild steel with blue color.
- Products are manufactured by a complete line of States of art automatic sheet bending machine.



## Treat-waiting Chair

PRO-HF2056

### TECHNICAL SPECIFICATION

- Standard sized high quality waiting chair are made of mild steel sheet & tubes.
- Unique design with perforated sheet seat & back thats ensure light weight & comfortable.
- Fully knock down system.
- Foam cushioning on seat & back part.
- Products are manufactured by a complete line of States of art automatic sheet bending machine.



## Waiting Chair (Stainless Steel)

PRO-HF2057

### TECHNICAL SPECIFICATION

- Standard sized high quality waiting chair are made of mild steel sheet & tubes.
- Unique design with perforated sheet seat & back that ensure light weight & comfortable.
- Fully knock down system.
- Seat & back are mild steel with blue color.
- Products are manufactured by a complete line of States of art automatic sheet bending machine.
- Metal Type: Aluminum
- Specific Use: Waiting Chair
- CBM: 0.29 for 3 seat
- Metal Color: Optional
- Warranty: 5 years



## Waiting Chair (Stainless Steel)

PRO-HF2058

### TECHNICAL SPECIFICATION

- Standard sized high quality waiting chair are made of mild steel sheet & tubes.
- Unique design with perforated sheet seat & back that ensure light weight & comfortable.
- Fully knock down system.
- Seat & back are mild steel with blue color.
- Products are manufactured by a complete line of States of art automatic sheet bending machine.
- Material: Fabric, Steel frame
- Type: Airport chair
- Metal Type: Stainless Steel
- armrest: Optional (Metal Coated arms)
- warranty: 3 years



## Dental Nurse Stool Chair

PRO-HF2059

### TECHNICAL SPECIFICATION

- Best quality Manual Height Adjustable Counter Stool are made of stainless steel.
- Easy and damage free transportation
- Seat Cushion: W 460 X D425 mm
- Back: W 410 X H310 mm
- Back Material: PU Polyurethane
- Surface: Polishing



## Denta Doctor Stool

PRO-HF2060

### TECHNICAL SPECIFICATION

- Weight: 5.65 kg
- Diameter Seat: 340 mm
- Height adjustable: 540 x 670 mm
- This versatile DENTA-DOCTOR STOOL offers all the comfort which professional dental treatment requires.



## Counter Stool

PRO-HF2061

### TECHNICAL SPECIFICATION

- Size: Ø350 x 565 to 690mm (H).
- Best quality Manual Height Adjustable Counter Stool are made of stainless steel.
- Structure made of TIG welded shiny color polish finished Stainless Steel.
- 4 Nos. Stainless steel leg with pvc inner stopper.
- Top on made by fully stainless steel sheet.
- Easy and damage free transportation



## Nurse Stool

PRO-HF2062

### TECHNICAL SPECIFICATION

- Size: Ø350 x 565 to 690mm (H).
- Best quality Manual Height Adjustable nurse tool are made of stainless steel.
- Structure made of TIG welded shiny color polish finished Stainless Steel.
- Leg with 5nos. castors are made of PVC.
- Foam cushioning covered with high quality rexin on imported ply wood shell.
- Easy and damage free transportation.



## Medical Physical Therapy Dialysis Chair PRO-HF2063

### TECHNICAL SPECIFICATION

- Seat size 1980mmL 580 - 750)mm
- Seat height 550mm
- Back rest lifting 0° - 70°
- Leg rest lifting 20° - 90°
- Armrest swing out 0° - 180°
- Armrest height adjustable 100mm
- Armrest size 480'160mm
- Dia 100mm Castor 4pcs Power line 1pc



## Multifunction Mover Transfer Commode Wheelchair PRO-HF2064

### TECHNICAL SPECIFICATION

- Patented
- Assisting the mobility-impaired in moving from wheelchair to sofa, bed, bathroom and other places so that they can do washing, showering and treating on their own.
- Wide-ranged folding design saves labour and reduces waist-bearing.
- Max. load of 120kgs makes it applicable to different body shapes.
- Adjustable height.
- The mute wheels, wheel brake system and double buckles ensure high using security.
- Water-proof materials.
- Soft cushion for long-time sitting and various using applications.
- There is a small tube for the infusion support. The tube is detachable and changeable to left or right side.
- Stylish colors apply to all kinds of scenarios.





## Air Laminar Flow Cabinet for LAB PRO-HF2065

### TECHNICAL SPECIFICATION

- Single-person single-side (horizontal air supply)
- Grade 100 (209E U.S. Federal)
- 0.5per utensil.hour (90mm utensil)
- The average wind speed 0.25-0.45m/s(Speed two-speed)
- Noise 562dB
- Power supply AC, 220 V/50Hz
- Illumination z300LX
- Half ventilation peak value 5 5pm(XYZ direction)
- Dimension of working area(W1 x D1 x H1) 880 x 510 x 580mm
- Overall dimension 1040 x 690 x 1600mm



## Double Person LAB Workstation PRO-HF2066

### TECHNICAL SPECIFICATION

- Voltage: 220v/50Hz, 100v/60Hz
- Power: 500W Airflow amount: 175m/h Maximum
- pressure: -16kba Maximum noise intensity: -65db D
- imensions: 160cm x 60cm x 80-85cm (adjustable)
- Packing size: 180cmx70cmx80cm
- Weight: 100kg



## Medical Records Trolley PRO-HF2067

### TECHNICAL SPECIFICATION

- Size: L-410 x W-450 x Hx900 mm
- All body are made of stainless steel sheet with shint color polished finished.
- Two part trolley's are 20 pcs file records system with two small drawer on upper portion.
- Easy & central locking system file storage.
- 3" Four pcs swivel caster on ower part for moving around.



## Medical Records Trolley PRO-HF2068

### TECHNICAL SPECIFICATION

- Size: L-630 x W-450 x Hx900 mm
- All body are made of stainless steel sheet with shint color polished finished.
- Two part trolley's are 40 pcs file records system with two small drawer on upper portion.
- Easy & central locking system file storage.
- 3" Four pcs swivel caster on ower part for moving around.



## Medical Trolley

PRO-HF2069

### TECHNICAL SPECIFICATION

- Size: L-900 x W-500 x Hx900 mm
- Medical trolley structure made made of stainless steel round tube , sheet with shiny color polish finished with lilen fabrics cloths. Two part of trolley. One are waste trolley & another one
- are three shelf with three side protective rails medicine trolley.
- Four swivel caster on lower part on lower parts.



## Stainless Steel Medical Records Trolleys

PRO-HF2070

### TECHNICAL SPECIFICATION

- Size: L-600 x W-400 x Hx750 mm
- Waste trolley structure made made of stainless steel round tube with shiny color polish
- finished with lilen fabrics cloths.
- Four swivel caster on lower part on lower parts.



## Foot Stool

PRO-HF2071

### TECHNICAL SPECIFICATION

- Size: 450mm (L) x 625mm (W) x 450mm (H).
- Standard Sized Foot Stool is made by Non-Magnetic Stainless Steel tubular frame & Angle with Lamination board.
- All Shiny color finished mirror polished.
- Plastic inner stopper of end of the tube.



## Medical Flat trolley

PRO-HF2072

### TECHNICAL SPECIFICATION

- Size: L-900xW-450xH-760 mm
- Flat trolley made of mild steel tube with mild steel checker plate with epoxy coated phosphating back oven heat paints.
- Four Pcs 4" heavy caster wheel on lower part.



## Medicine Cabinet

### PRO-HF2073

#### TECHNICAL SPECIFICATION

- Size: L-900xW-450xH-1830 mm
- Cabinet all body made of mild steel sheet with epoxy coated powder coated heat paint
- Two nos MS framing Glass door on Upper portion & two nos solid ms door on lower portion.
- Four shelf & Five equal gap in cabinet.



## Instrument Cabinet

### PRO-HF2074

#### TECHNICAL SPECIFICATION

- Size: L-900xW-450xH-1830 mm
  - Cabinet all body made of stainless steel sheet with TIG welding.
  - Two nos SS framing Glass door.
  - Four shelf & Five equal gap in cabinet.
- All stainless steel are shiny color polish finished.



## Personal Locker

### PRO-HF2075

#### TECHNICAL SPECIFICATION

- Size: L-1010 x W-305 x H-1830 mm
- Locker made of 2.00 & 0.7mm thick Cold Rolled Mild Steel shelves.
- All surface of Mild Steel are mig welded, chemically de-rusted and zinc phosphate coated with oven backed paint finis that confirms anti rust, shiny color and longevity.
- 18 chambers with individual locking systems
- Products are manufactured by a complete line of State of the automatic art machines
- Easy and damage free transportation: Fixed flat box product
- Free assembly service at home with expert technician.



## Doctors Cabinet

### PRO-HF2076

#### TECHNICAL SPECIFICATION

- Size:- L-450 x W-483 x H-1800 mm
- Standard sized Doctors Cabinet all body are made of Mild steel sheet.
- There is one small shelf on top part, one hanging portion on middle Part & one shoe rack storage on lower part.
- Overall cabinet covered by on door.
- All MS are Zinc-phosphate coated electro-static epoxy powder oven baked paint finish that confirms anti rust, shiny color and longevity.





## Mortuary Cabinet Six Chamber PRO-HF2077

### TECHNICAL SPECIFICATION

- Power Source: Electric
- Material: SS
- Display Type: Digital LED 3.5 inch
- Uniformity: +1 deg C
- Temperature Sensor: 2.0 deg C to 8.0 deg C
- Display Resolution: 0.1 degree
- Power Supply: 230 V AC /Single Phase ,16 AMP



## Mortuary Cabinet Three Chamber PRO-HF2078

### TECHNICAL SPECIFICATION

- Temperature range: -15°C to 10°C
- Platinum resistance temperature sensor
- Stainless steel 304
- Insulation, PUF, Trolley
- Made of stainless steel; Run on rollers fitted with ball bearings
- Doors: Solid insulated doors; Fixed on SS hinges; Spring door latch
- Air circulation
- Axial fan
- Illumination
- LED light
- Alarms
- Audio / visual alarms
- Power supply: 220 Volts 50Hz



## Mortuary Chamber Portable

PRO-HF2079

### TECHNICAL SPECIFICATION

- Capacity: 1 Body
- Dimension (L x D x H): 32" x 96" x 40"
- Double walled mortuary chamber
- Digital PID temperature controller cum indicator
- PUF insulation of 80 mm to avoid thermal loss
- Inner chamber made of SS-304 & outer chamber made of mild steel duly powder coated
- CFC free eco friendly compressor
- Temperature of +2 to +6°C.
- Works on 230V, 50Hz AC supply



## Mobile Mortuary For Single Body

PRO-HF2080

### TECHNICAL SPECIFICATION

- Capacity: 1 Body
- Dimension (L x H x W): 90" x 28" x 28"
- Structure of the body: Full Steel & Copper
- Input volt: 220-230V
- Temperature : Digital display, adjustable temperature
- Compressor: 325 W special
- Applicable generator: 2000VA to 2800 VA
- Applicable stabilizer: 1.5 kva wide range special







## PROMIXCO CONCERNS

 <p>PROMIXCO LIMITED</p>	 <p>BANGLADESH MULTIPLES CO. LIMITED</p>	 <p>PROMIXCO HEALTHCARE LIMITED</p>	 <p>KIJAL ELECTRONICS</p>	
 <p>PROMIXCO PHARMACEUTICALS LIMITED</p>	 <p>FH PLASTIC INDUSTRY LIMITED</p>	 <p>SAM Wears Limited</p>		 <p>RainD</p>
 <p>LD VETERINARY HOSPITAL &amp; DAY CARE LIMITED A Leading Veterinary Hospital</p>	 <p>PROMIXCO USA CORP.</p>	 <p>NirHealth+ Hospital and Diagnostic Limited</p>		
 <p>PROMIXCO AGRO PRODUCTS LTD. Local Food, Global Life</p>	 <p>PBRI Promixco Biomedical Research &amp; Innovation</p>	 <p>Skyline BUILDERS</p>	 <p>ROMIX ELECTRONICS</p>	

## BRANDS

## CSR

			
--	--	--	---

## MEDIA


---



[www.promixcogroup.com](http://www.promixcogroup.com)



**Corporate Office**

Shanta Forum, 187, 188/B Tejgaon Link Road, Dhaka 1215

**Corporate Sales**

34 Topkhana Road, Paltan, Dhaka 1000

**USA Office**

97-77 Queens Blvd. 9th Floor, Rego Park NY 11374, USACorporate Office

**Factory**

103/1, Promixco Industrial Park Road, Mouchak  
Kaliakair, Gazipur 1750, Bangladesh

Email: [info@promixcoltd.com](mailto:info@promixcoltd.com)  
Phone : +880 9644 22 33 44