

# OFFICE FURNITURE



*Style* 



# About PROMIXCO

PROMIXCO started business 23 years ago as a supplier of healthcare products to various purchasing organizations in Bangladesh. It has since grown into a group of companies consisting of ten business units, engaged in both trading and manufacturing of mainly healthcare products.

Our factory has CE, ISO, FSC, BCSIR, DGDA, and GMP certifications and therefore guaranteed as conforming to international standards. We have expanded our product range over time and in 2010 became the first company to manufacture medical equipment and devices within Bangladesh.

The products manufactured by PROMIXCO are not only catering to domestic needs, they have a growing presence in international markets. We are thus contributing towards attaining the goals of the Government to have a flourishing and developed Bangladesh in a number of ways: (i) saving foreign exchange through import substitution, (ii) earning foreign exchange through export promotion, (iii) increasing industrial manufacturing capacity and diversity within the country, (iv) generating employment in the country, (v) helping ensure better health of the population which is essential for a nation's economic well-being, and (vi) enhancing the image and reputation of the country by supplying high-quality products to the global market.

We committed ourselves right from the beginning to supply quality medical equipment and devices at the most affordable prices, so that the financial burden of obtaining diagnostic and medical services at diagnostic centers and hospitals can be alleviated for the patients.

PROMIXCO provided humanitarian services during the Covid-19 pandemic by supplying – free-of-cost – safety gear and products to government, semi-government and non-government organizations. Our officers and staff personally ensured uninterrupted delivery of the products braving the risks of sickness and death to themselves, so that their fellow citizens may remain protected and safe.

We adhere to good corporate governance in our continuing endeavor to be good corporate citizens. We deliver value to our customers and stakeholders. We ensure worker safety and workplace safety in our state-of-the-art manufacturing facilities. We promote teamwork and prioritize employee interests and well-being. We honor our bankers and partners and engage in different social activities – often in collaboration with them. We are confident that we symbolize trust in the business scenario of Bangladesh.

In return, we seek policy support from the Government, and access to incentives for manufacture of medical equipment and devices, which has been included for the first time as an industrial sector in the National Industrial Policy of 2022. We take satisfaction and pride in this inclusion because PROMIXCO, almost single-handedly, carried out a long campaign to raise awareness and create consensus among relevant Government bodies and policymakers to the fact that medical equipment and devices manufacture merited recognition as a distinct industry in the interests of the nation.



# Table of Contents

---

● OFFICE & HOME SOFA SERIES	01
● DIRECTOR DESK SERIES	07
● OFFICE WORK STATION	16
● OFFICE EXECUTIVE CHAIR	19
● COUCHES CHAIR SERIES	25
● OFFICE STORAGE UNIT	31
● OFFICE RECEPTION DESK	37
● OFFICE RECEPTION DESK	41
● OFFICE WAITING CHAIR	45
● AIRPORT LOUNGE CHAIR	47
● AUDITORIUM CHAIR	49







History of Furniture; As a result of business expansion in the latter part of the 19th century, the furniture industry also experienced significant growth. Furniture manufacturing began in the United States in the workshops of colonial craftsmen, where work was exclusively done by hand. Still, in the nineteenth century, it evolved into larger firms that produced products in large quantities – “batch production” – and developed machinery which could replace the essential work of many craftsmen.

Stylo is the fifth largest manufacturer in the furniture industry in Bangladesh and a high-quality product manufacturer with contemporary lines and reasonable prices. We stock all raw materials, making it an excellent choice for our clients, even those who want wood instead of laminate. Our furniture production by skilled artisans; CNC stands for Computerized Numerical Control, designed by internationally renowned designers, and high-quality raw materials are manufactured. The Stylo is a sister concern of PROMIXCO Group.

Stylo, with a full manufacturing and marketing, online division, and catalog, carries the full breadth of Stylo's product line. But this catalog also features a large sample of our products specified in the various ways available. This catalog is more of an idea than an actual facility, but it's helpful to get a feel for what you want. Stylo is a genuinely sophisticated furniture manufacturer, and we can meet you in every way, including specifying the finishes and features you desire and pricing your project for you.

Stylo is a fast delivery, competitive price with a 10-year warranty. If you are looking for a modern design furniture on a budget, check out this catalog. Stylo, Full Line List, and Price Book 2023 will assist you in understanding how large our product lines are and how many features and finishes can be specified. We have already gained experience in all types of projects for our efficient and modern designs and fixed prices. If you have not done business with us yet, give us a chance to win your trust. We will not let you down, you have our word on that.

Stylo is your luxury of yourself.  
Thank you for making us successful.

A handwritten signature in black ink, appearing to read 'Mousumi Islam'. The signature is stylized and fluid, with a large initial 'M'.

**Mousumi Islam**  
Chairperson

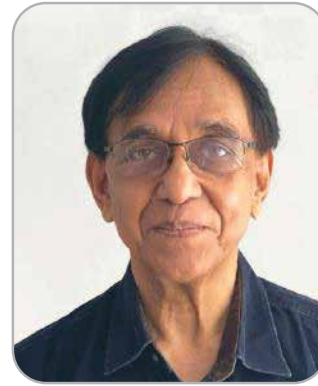
# OUR TEAM



**SAMANTA ISLAM**  
Managing Director



**S M SHAMIM-UZ-ZAMAN**  
Director  
Former Ambassador  
Former Military Secretary to Hon'ble President



**Ahmed Ali**  
Special Assistant to MD  
Former Consultant  
World Bank



**MOHAMMAD ABDULL HANNAN ZOARDER**  
Financial Adviser  
Former Executive Director  
BSEC & BICM



**Md Didarul Islam Dipu**  
Head of Administration



**Khalilur Rahman Mazumdar**  
Head of Finance



**Ali Ul Asad**  
AGM Construction

# Production Line

---





# Office & Home **SOFA** series



*Stylo*



Style:- Sectionals



Sectional Sofa  
STO-25F  
STO-25LR



Imposing Sofa  
STO-30MF

Style:- Unique Statements



21st Century Sofa

STO-35F  
STO-35R



Mid Century Sofa

STO-36F  
STO-36R

Style:- Comfortable



Sleeper sofa  
STO-3-38F  
STO-3-38R



Lipseat Sofa  
STO-2-40F  
STO-2-40R



Style:- Convertible



Love Seat sofa

STO-2-42F

STO-2-42R



Recliner Sofa

STO-2-45F

STO-2-45R

## Style:- Small in Scale



3 Seater Cambered Sofa

STO-2-46F

STO-2-46R



3 Seater Crooked Sofa

STO-3-47F

# Director Desk series







Corner Wooden Writing Desk  
STO-TD001WD



Executive Writing Desk  
STO-TD002WD



Corner Wooden Writing Desk  
STO-TD003WD



Executive Writing Desk  
STO-TD005WD



Corner Wooden Writing Desk  
STO-TD008WD



Executive Writing Desk  
STO-TD009WD





Executive Desk With Drawers  
STO-TD006WD



Executive Desk With Drawers  
STO-TD007WD



Executive Desk With Drawers  
STO-TM010LB



Manager Table With Drawers  
STO-TD011WD



Executive Table  
STO-OET013LB



Executive Table  
STO-OET014LB





Executive Table  
STO-OET015LB



Executive Table  
STO-OET016LB

# Work Station





Office Work Station  
STO-OD020LB



Office Work Station  
STO-OD021LB



Executive Table  
STO-OET017LB



Computer Desk  
STO-CT018LB





Computer Table  
STO-CT019LB



Damarion Desk With Hutch  
STO-CT020LB

# Executive Chair





Executive Chair  
STO-ODC050R



Executive Chair  
STO-OVC070R



Executive Chair  
STO-CC075P



Executive Chair  
STO-CC076P





Executive Chair  
STO-OVC0077P



Executive Chair  
STO-CC078F



Executive Chair  
STO-OEC100FR



Executive Chair  
STO-OEC101FR



Executive Chair  
STO-OVC0078FR



Executive Chair  
STO-ODC110FR

# Couches CHAIR series





Executive Chair  
STO-CC200FF



Executive Chair  
STO-CC201FR





Arm Chair  
STO-CC202FF



Arm Chair  
STO-CC203FF



Arm Chair  
STO-CC205FF



Arm Chair  
STO-CC206FR



Arm Chair  
STO-CC209FF



Arm Chair  
STO-CC210FF



Arm Chair  
STO-SS300FF



Arm Chair  
STO-SS301FF

# Storage Unit







Low Height Cabinet  
STO-OS320LB



Side Table  
STO-Os321LB



Low Height Cabinet  
STO-0S322LB



Side Rack  
STO-OR325LB



Compactable Cabinet  
STO-0S350MS



Office Storage  
STO-0S351MS



Drawer Unit  
STO-0F370LB



Movable Drawer Unit  
STO-0F371LB



Movable Drawer Unit  
STO-0F372LB



Drawer Unit  
STO-0F373MS



# Reception Desk





Modular Reception Desk  
STO-00D400LB



Reception Desk  
STO-00D401WD



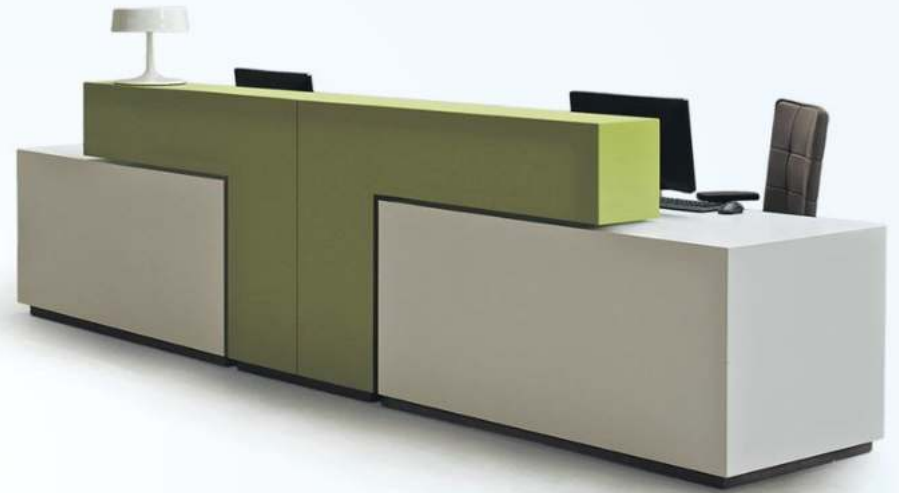
Reception Desk  
STO-00D402WD



Reception Desk  
STO-00D403WD



Reception Desk  
STO-00D4004WD



Reception Desk  
STO-00D405WD

# Conference Table







Conference Table  
STO-CT420LB



Conference Table  
STO-CT421LB



Conference Table  
STO-CT422MS



Conference Table  
STO-CT423WD



Conference Table  
STO-CT424WD



Conference Table  
STO-CT425WD

# Waiting Chair





Waiting Bench  
STO-WC430FF



Waiting Bench  
STO-WC431FF



Upholstered Bench  
STO-WB435FF



Modular Bench  
STO-WB436FF





3-Seater Chair  
STO-WC425MS



3-Seater Chair  
STO-WC426WD

# Airport LOUNGE Chair



*Style*



Waiting Bench  
STO-WC427WD



Waiting Bench  
STO-WC428WD



# Auditorium CHAIR



*Style*



Auditorium chair  
STO-WB436FF



Auditorium chair  
STO-WB437FF

## PROMIXCO CONCERNS

 <p>PROMIXCO LIMITED</p>	 <p>BANGLADESH MULTIFIBRES CO. LIMITED</p>	 <p>PROMIXCO HEALTHCARE LIMITED</p>
 <p>PROMIXCO PHARMACEUTICALS LIMITED</p>	 <p>FH PLASTIC INDUSTRY LIMITED</p>	 <p>SAM Wears Limited</p>
 <p>LD VETERINARY HOSPITAL &amp; DAY CARE LIMITED A Leading Veterinary Hospital</p>	 <p>PROMIXCO USA CORP.</p>	 <p>NivHealth+ Hospital and Diagnostic Limited</p>
 <p>PROMIXCO AGRO PRODUCTS LTD. Good Food. Good Life.</p>	 <p>PBRI Promixco Biomedical Research &amp; Innovation</p>	 <p>Skyline Builders Engineering</p>

## BRANDS

## CSR

 <p>Rahima &amp; Bulu ElderlyCare</p>	 <p>BS ORPHANAGE FOUNDATION</p>	 <p>AGWEB Association of Grassroots Women Entrepreneurs Bangladesh</p>	 <p>MEDMEB Medical Equipment &amp; Devices Manufacturer Association Bangladesh</p>
--	--	--	---

## MEDIA

 <p>EB ENTREPRENEUR BANGLADESH</p>
---





# PROMIXCO LIMITED

## **Corporate Office**

Shanta Forum, 187, 188/B Tejgaon Link Road, Dhaka 1215

## **Corporate Sales**

34 Topkkhana Road, Paltan, Dhaka 1000

## **USA Office**

35-37 36th Street, 4th Floor, Office No # 413, Queens Astoria, NY, 11106, USA

## **Factory**

103/1, Promixco Industrial Park Road, Mouchak  
Kaliakair, Gazipur 1750, Bangladesh

Phone : +880 9644 22 33 44  
[www.promixcogroup.com](http://www.promixcogroup.com)